

Alexander Jevon 2010 VFX Reel Breakdown

07816 292 534 – aj@ajcgi.co.uk

BBC Wallander



Softimage Particles, composited with a garbage matte, to fill in fog.

BBC Axon



Animated double helix rigged for deformation, green screen keying, 3D particle sparks.

BBC Waking The Dead



Mid-Poly stunt double, Syflex cloth and hair, animated in Softimage.

Personal Project



Recreation of a shot from a TV series, showing a barcode being drawn by hand. Rotoscoping exercise.

Personal Project



Particle instanced bats, geometry modelled in Softimage, composited in After Effects and tracked using Synthetics.

BBC iScience



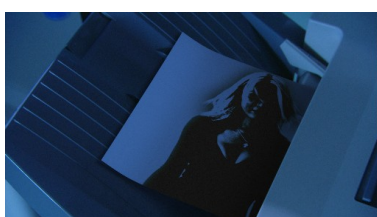
CO2 particles, instanced using a 3D particle system.

BBC Waking The Dead



3D digital flies, animated by hand in Softimage.

Love – Nowhere To Run



Syflex cloth simulation, colliding with 3D objects representing the photocopy.

Tom Six's

The Human Centipede



2D patch job in After Effects to remove the teeth of this patient.